

# SATURDAY CLASSES

## Workshop #201

### *Scrappy Layered Log Cabin*



#### ***Karen Eckmeier***

This log cabin has an attitude! Relax and enjoy topstitched seams, curvy edges, no measuring, blocks of different sizes and raw-edge prairie points embellished with beads. Finished size - 42" x 50" (wall hanging or lap size).

#### **Supplies:**

- Sewing machine (Featherweights are fine).
- Rotary cutter, ruler, and mat.
- Threads for topstitching - select threads to match fabrics or use variegated threads.
- Neutral thread for bobbin.
- Fabric scissors (large and small).
- Pins.
- Seam ripper.
- Fabric glue.
- Tweezers.
- Multi-color beads in different sizes (not needed for class but fun to bring for a sneak peek at what they will look like on the block).
- Book - ***Layered Waves*** (\$24.95) highly recommended for class!

#### **Fabric:**

- Darks: A large assortment of dark scraps in a wide range of colors – approximately 1 yard.

- Lights: A large assortment of light scraps in a wide range of colors – approximately 1 yard.
- Center Squares: 1/8 yard of black.
- Outer Border: Approximately 1 ½ yards of black (this will vary according to the size quilt you want to make AND how large your blocks turn out to be).

### IMPORTANT HINTS ON FABRIC SELECTION

- Variety is the key ingredient to this scrap quilt. Beg, barter, or borrow from friends, if necessary. You will need a total of approximately 2 yards of fabric. Fabric requirements for either the wall hanging/lap quilt or a bed quilt will depend on the size of your finished block (which varies!).
- Scraps should measure a minimum of 2" wide by a minimum length of 2" / maximum length 44").
- Try to avoid large bold prints. These patterns will compete with the log cabin design.
- 2" x 2 ½" pre-cut strips or the "Bali Pop" strips will work for this project. It is not necessary to pre-cut strips for this class, but if you have them already cut from another project, bring them along
- If you like a more "planned-scrappy-look," select two high contrasting colors only. For example, if you want to make a yellow and blue quilt: yellows will be your lights and the blues will be your darks. Bring approximately 1 yard of light yellow in assorted patterns, and 1 yard of dark blues in assorted patterns.



## Workshop #202

### *Aunt Millie's Garden*



#### ***Becky Goldsmith***

Lovely blocks from an old-fashioned garden are yours, fresh for the picking! Good technique is important! Time in class will be spent learning to perfect the needleturn applique techniques found in this block. You will learn easy template making, how to make and use a placement for applique, the invisible applique stitch, and much more.

#### **Supplies:**

- Small, sharp paper scissors.
- Small, sharp fabric scissors.

- An ultra-fine point Sharpie marker.
- One 14" x 14" square of clear upholstery vinyl in a medium weight. Keep the tissue paper that comes with the vinyl.
- One sheet of clear, heavyweight, self-adhesive laminate - available at most office supply stores or on our website (pieceocake.com). Get the single-sided sheets, not the two-sided pouches. Avoid repositionable laminate.
- Becky will provide you with 2 needles and some sequin pins for pinning applique. You will need additional pins. She prefers the ½" sequin pins for pinning applique.
- Becky will have some Superior Masterpiece 100% cotton thread for you to sew with in class. If you would like to bring thread from home to use in class, Becky recommends 100% cotton threads (Superior Masterpiece, Aurfil 50 weight, Mettler 60 weight, DMC 50 weight machine embroidery thread, or YLI Soft Touch cotton. All are fine, strong 2-ply threads.
- White chalk pencil (Becky likes the General's charcoal pencil in white).
- A General's Sketch & Wash OR a Quilter's Ultimate Mechanical Pencil.
- A sandpaper board or bring a sheet of fine grain sandpaper if you don't have a board.
- Baggies for your templates.

**Optional Supplies:**

- A light and extension cord in case the room is dark.
- Many people find that applique is easier if they have a pillow in their lap to rest their forearms on. It's a good idea to bring a pillow to class for this purpose.

**Fabric** (Pre-wash all fabric before class. It appliques better!)

- Background Fabric:** Cut 1 square 16" x 16".
- Applique Fabric:** Bring scraps of fabric that are at least 6" x 6" square that would be suitable for a stem, leaf, and flower. Bring more fabric if you would like to have more color choices.



## Workshop #203

### *Smith Mountain Morning*



#### ***Bonnie K. Hunter***

Early morning sunrises over the beautiful Blue Ridge Mountains inspired the name for this pattern. Smith Mountain Morning is a two-block quilt, with the star block or 54-40 or Fight variation, in two color ways and a Chimney and Cornerstones log cabin variation that is rotated to complete the design between stars. This is a great quilt for learning to use the Easy Angle Ruler, the Companion Angle Ruler and the Tri Recs Ruler!

#### **Supplies:**

- Sewing machine with 1/4" foot (including all cords, foot pedal, bobbin case, manual, etc.).
- Rotary Cutter, ruler and mat. Treat yourself to a new blade, you are going to need it!).
- Easy Angle Ruler for half square triangles (or you can use your method of choice for creating half square triangles that FINISH at 3" in the quilt.
- Companion Angle Ruler (regular rotary cutting measurements can be given for those who do not have this ruler).
- Tri Recs Ruler (for the tall star points). You won't want to do these units any other way again!
- General sewing supplies.

#### **Fabrics:**

For the blocks and outer border:

- 3 yards of assorted blue scraps
- 3 yards of assorted brown scraps.

- 2 yards of unbleached muslin.
- Inner border: ½ yard of light blue.

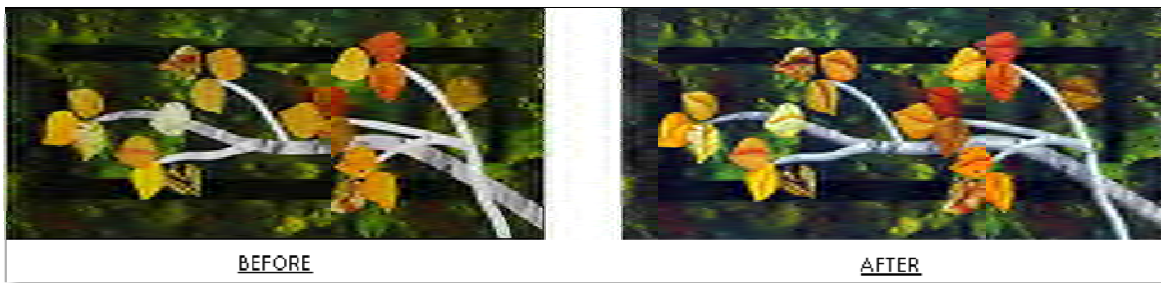
**Other supplies needed:**

- Scraps & Shirrtails II* book (available from Bonnie at [www.quiltville.com](http://www.quiltville.com)).



## Workshop #204

### *Painted Fall Leaves*



***Annette Kennedy***

Add visual depth to a fused applique wall hanging full of autumn leaves and branches with transparent Seta Color paints. The project is approximately 20” wide by 9” high. We’ll do the cutting and fusing at the beginning of class and then, using my paints and brushes and medium, you’ll learn my easy “controlled hand painting” technique to bring the leaves and branches to LIFE!

**Supply Kit Fee:** \$16.00 fee includes the pattern and use of paint, medium, and brushes.

**Supplies:** NO SEWING MACHINE REQUIRED

- Rotary cutter, small cutting mat and ruler (24” x 3” to 6”).
- Fabric scissors.
- Mechanical pencil and a good eraser.
- Small roll of paper towels.
- Plastic bowl (like a margarine or sour cream container) for water.
- Small blow dryer (optional) – one can be shared between 2 to 4 students.

**Fabric:**

- Background: mottled medium and dark green fabric (could have some muted fall colors in it but should not be bright which would compete with the leaves for dominance) 20” wide x 9” high.
- Inner borders: a piece of very dark green fabric that will show up on your background fabric 4” x 17 ½”.

- Branches: 1 fat quarter of very light grey/white fabric that resembles Aspen or Birch tree bark.
- Leaves: there are 20 to 21 leaves on the wall hanging that measure approximately 1 ½" x 2" each. Bring scraps or fat quarters of at least 6 different yellow-orange and orange fabrics.
- Wonder Under fusible web - regular weight (1 1/4 yards). Be sure the paper backing is stuck to the webbing and is not separating off.



## **Workshop #205**

### ***Playing With Paint***



#### ***Lyric Kinard***

Students will learn different methods of paint application including: mono printing, stamping, stenciling, and painting with a brush. We will discuss the properties of various fabric paints. Students will observe and try different methods of stamp carving.

**Supply Kit Fee:** \$10.00 fee payable to the teacher at class time.

**Supplies:** NO SEWING MACHINE REQUIRED

- Plain white or light colored cotton fabric - 10 to 20 notebook page sized pieces.
- Exacto knife with #14 blade.
- Foam paint brushes and any other paint brushes you have around.
- Cups to hold water and brushes.
- Stack of newspaper as a cutting and printing surface.
- Plastic or Styrofoam plate or palette.
- Scissors.

- Plastic garbage bags to carry home wet stuff.
- Paper towels.
- Notebook and pencil.
- Styrofoam meat trays.
- Wear old clothes or an apron.

**Optional Supplies:**

- 8" x 10" piece of glass (edges taped for safety).
- Soft rubber brayer.
- Linoleum carving tools.



## **Workshop #206**

### ***Sister's Challenge***



***Sara Madson***

This class explores cutwork appliqué blocks inspired by the old Baltimore Album quilts. History, techniques, and design are discussed. Sara also demonstrates her border technique of “appliqué over miters” used in her award winning quilt “Sister’s Challenge” which was published in ***Traditional Quiltworks*** in 2003.

**Supply Kit Fee:** \$16 for notebook (pattern)

**Supplies:**

- Freezer paper.
- Sharp-to-the-point scissors.
- Stapler.
- Pencil.
- Fabric markers.
- Thread to match applique fabrics.
- Thimble.
- Milliner's needles.
- Pins.
- Sharp paper scissors.

**Fabrics:**

- 1 ¼ yards background fabric.
- A variety of fabrics for applique totaling 1 ½ yards. Fabrics should coordinate with your border fabric. Six fat quarters would work well.

We will emphasize the cutwork blocks in this class. In addition to the pattern, Sara will have a variety of different blocks from which you can choose. Don't sweat the fabric choices. For the class, you can use a couple of 9" squares of background fabric and a couple of applique fabrics. You don't really need the border fabric for the class, unless you want to have it for fabric selection.

*Questions? – Sara's email is [slmadson@charter.net](mailto:slmadson@charter.net).*



## Workshop #207

### Cornucopia



#### ***Kathy Stubbs Ward***

Create a small wall hanging cornucopia of fall fruits and vegetables using several texturing techniques to create visual interest. You will learn mock smocking, stuffed work, textural leaves and stems & more.

#### **Supplies:**

- Sewing Machine (MUST have zig-zag capability) with regular sewing foot, open-toe applique foot, ¼" foot optional. Be sure the machine is clean and in good working order. Bring all the working parts and the reference book for your machine.
- Sewing machine needles: Topstitch #90/14 or #80/12 if that's all you can find.
- Scissors (both fabric and paper).
- Pencil.
- Stabilizer (can use freezer paper or any other type you prefer).
- Spray starch.
- Old towel to protect ironing board.
- A small piece of flat batting such as Thermore (about a fat quarter size).

#### **Fabrics:**

- Background: neutral color 30" x 22". Finished size is 25 ½" x 18 ½". Working on a larger background gives you some leeway to place your vegetables and cornucopia and then trim after all are in place.
- Cornucopia: brown print, woven look. One fat quarter.
- Eggplant: dark mottled purple 10" x 6". Green for top 3" x 3".
- Apples - medium and dark red - 2 pieces 4" x 5" each.
- Pumpkin: orange 10" square and a 2" square brown for the stem.
- Pineapple: 5 yellow/gold textured look prints 10" x 7" each. 2 green prints for top 4" squares.
- Corn - yellow print, small to look like kernels (4" x 6"). Green - uneven stripe or print for husks.

